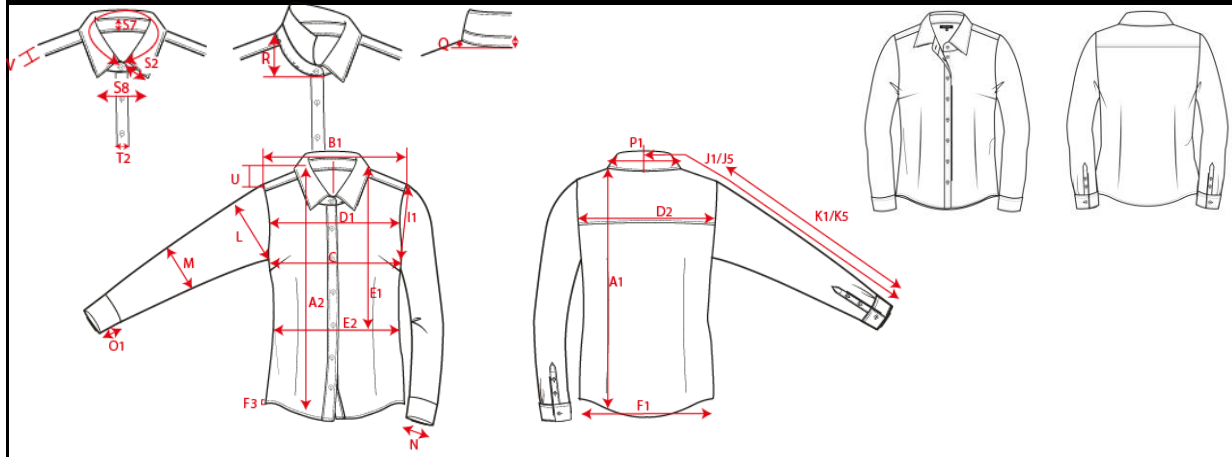


Production Size Specification

TRICORP



| | |
|-------------------|----------------|
| STYLE NO | 705015 |
| STYLE DESCRIPTION | Blouse Stretch |
| FIT | Blouse |
| GENDER | Women |
| DATE | 28-10-2024 |
| VERSION | V2 |

Sketch is for how to measure NOT for style

| | 32 | 34 | 36 | 38 | 40 | 42 | 44 | 46 | 48 | 50 | 52 | 54 | 56 | Tol | AQM |
|------------------------------------|-------|------|-------|-----|------|-----|------|-----|------|-----|------|-----|------|-----|-----|
| Body length | 169 | 170 | 171 | 172 | 173 | 174 | 175 | 176 | 177 | 178 | 179 | 180 | 181 | | |
| A1 Total back length meas from hsp | 64 | 65 | 66 | 67 | 68 | 69 | 70 | 71 | 72 | 73 | 74 | 75 | 76 | 1,0 | X |
| B1 Shoulder to shoulder | 35.25 | 36.5 | 37.75 | 39 | 40.5 | 42 | 43.5 | 45 | 46.5 | 48 | 49.5 | 51 | 52.5 | 1,0 | X |
| C 1/2 chest (at armhole) | 44 | 46 | 48 | 50 | 52.5 | 55 | 57.5 | 60 | 62.5 | 65 | 67.5 | 70 | 72.5 | 1,0 | X |
| K1 Upper arm length long sleeve | 62.5 | 63 | 63.5 | 64 | 64.5 | 65 | 65.5 | 66 | 66.5 | 67 | 67.5 | 68 | 68.5 | 0,5 | X |