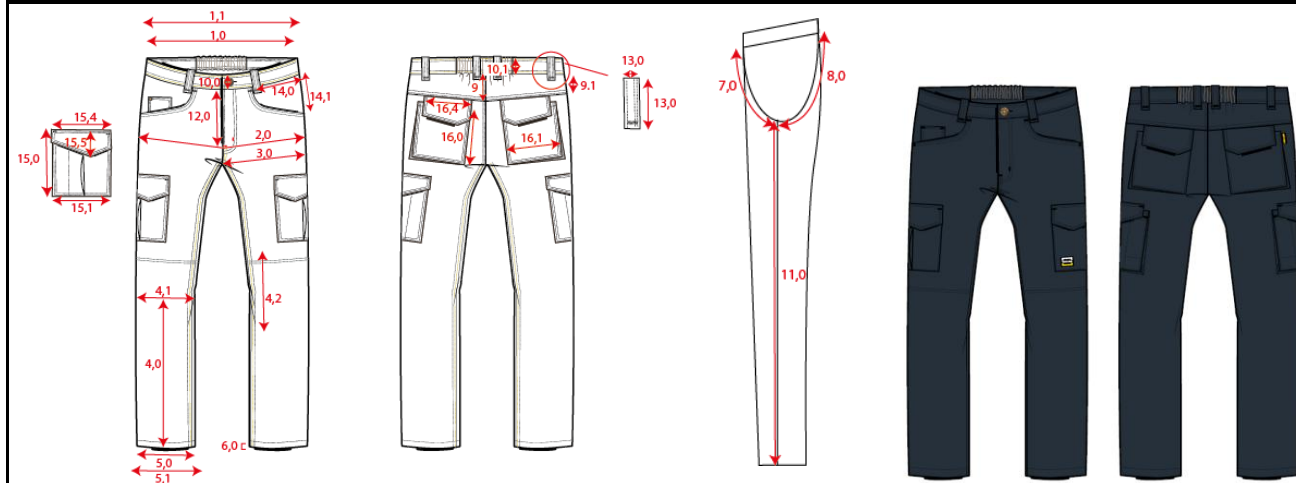


Production Size Specification

TRICORP



STYLE NO	502008
STYLE DESCRIPTION	Werkbroek Industrie
FIT	Trousers
GENDER	Unisex
DATE	30-1-2020
VERSION	V1

Sketch is for how to measure NOT for style

Size Short	21	22	23	24	25	26	27	28	29								
Size <b>Normal</b>	<b>42</b>	<b>44</b>	<b>46</b>	<b>48</b>	<b>50</b>	<b>52</b>	<b>54</b>	<b>56</b>	<b>58</b>	<b>60</b>	<b>62</b>	<b>64</b>	<b>66</b>				
Size Long	43	45	47	49	51	53	55	57	59								
<b>Measurements</b>																<b>Tol</b>	<b>AQM</b>
1.0 1/2 Waist relaxed	35	37,5	40	42,5	45	47,5	50	52,5	55	57,5	61,5	65,5	69,5		1,0		X
2.0 1/2 Hip (under zip)	45	47,5	50	52,5	55	57,5	60	62,5	65	67,5	71,5	75,5	79,5		1,0		X
3.0 1/2 Tigh	29	30,25	31,5	32,75	34	35,25	36,5	37,75	39	40,25	42,25	44,25	46,25		0,5		X
11,0 Inseam short (21-22-23-24-25-26-27)	78	78	78	78	78	78	78	78	78	78	78	78	78		1,0		X
11,0 Inseam normal (42-44-46-48-50-52-54-56-58-60-62-64-66)	83	83	83	83	83	83	83	83	83	83	83	83	83		1,0		X
11,0 Inseam long (43-45-47-49-51-53-55)	88	88	88	88	88	88	88	88	88	88	88	88	88		1,0		X