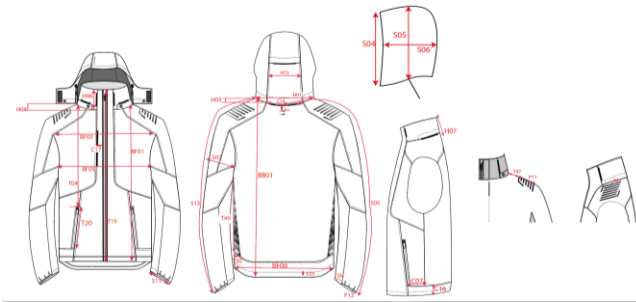


TRICORP

Production Size Specification



STYLE NO	406118
STYLE DESCRIPTION	Softshell Bicolor Redefined
FIT	Jas
GENDER	Unisex
DATE	19-11-2025
VERSION	V1

Measurement		XS	S	M	L	XL	XXL	3XL	4XL	5XL					TOL				AQM
BB01	Total backlength meas from hsp	69.0	71.0	73.0	75.0	77.0	79.0	81.0	83.5	84.8					1.0				X
BF05	1/2 chest (at armhole)	48.0	52.0	56.0	60.0	64.0	68.0	72.0	78.0	84.0					1.0				X
BF08	1/2 Bottom	44.0	48.0	52.0	56.0	60.0	64.0	68.0	74.0	80.0					1.0				X
S13	Upper arm length sleeve measured from HSP	81.3	82.5	83.8	85.0	86.5	88.0	89.5	91.0	92.5					1.0				