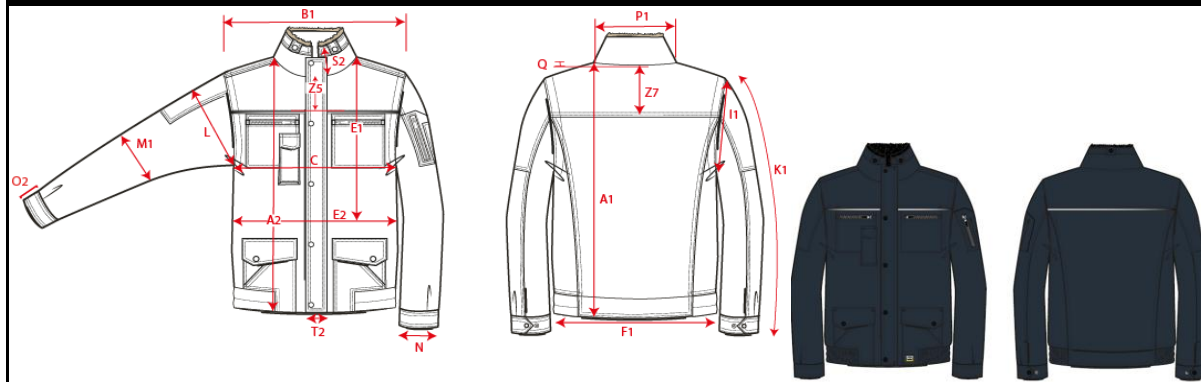


Production Size Specification

TRICORP



Sketch is for how to measure NOT for style

STYLE NO	402005
STYLE DESCRIPTION	Pilotjack Industrie
FIT	Jassen
GENDER	unisex
DATE	12-8-2019
VERSION	V1

		XS	S	M	L	XL	XXL	3XL	4XL	5XL	7XL	Tot				AQM
		177	179	181	183	185	187	189	191	193	193					
A1	Centre back length	71	72,5	74	75,5	76,5	77,5	78,5	79,5	80,5	81,5	1,0				X
B1	Shoulder to shoulder	51	52	53	54	55	56	57	58	60	64	1,0				X
C	1/2 chest (at armhole)	64	66	68	70	72	74	76	78	80	84	1,0				X
K1	Upper arm length long sleeve	65	66	67	68	69	70	71	72	73	74	1,0				X